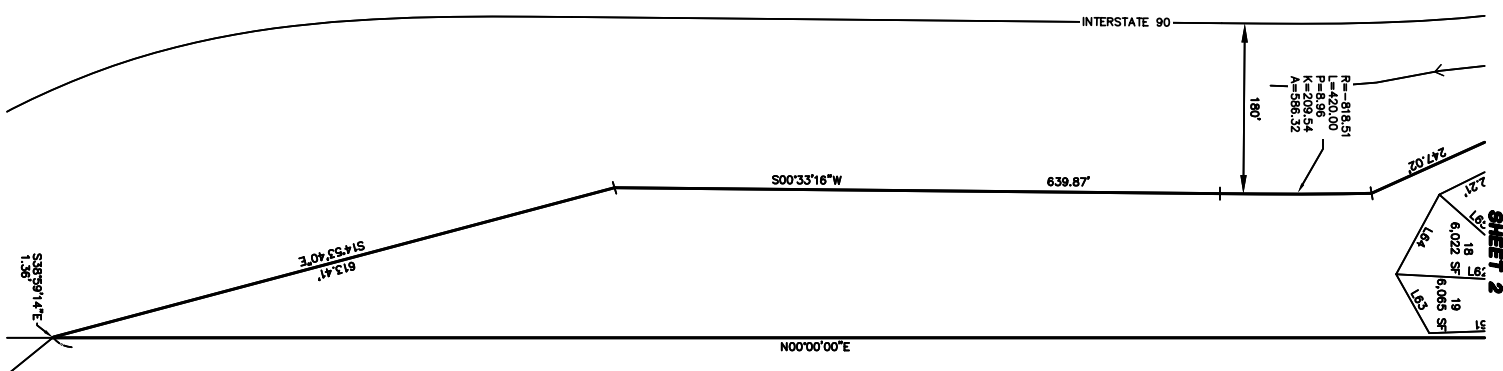


**PLAT OF YELLOWSTONE TRAIL ESTATES  
A PTN. OF THE EAST 1/2 OF SECTION 9, T.22N, R.1E., W.M.  
KITITAS COUNTY, WASHINGTON**

LP-09-00006

22-11-09041-0002



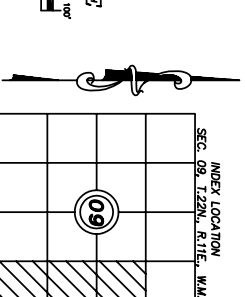
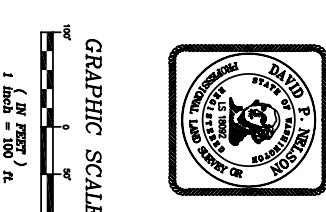
**SHEET 2**  
19 31  
18 31  
18 31  
6,022 SF  
6,065 SF  
247.02  
180'

LINE	BEARING	DISTANCE
L19	N89°43'48"E	142.50
L20	S41°55'10"E	23.97
L21	S66°09'19"E	136.17
L22	N85°52'03"E	156.09
L23	S13°28'47"E	18.77
L24	S16°09'05"W	106.03
L25	S10°16'08"E	68.28
L26	S79°43'52"W	25.00
L27	N89°43'48"E	174.88
L28	S41°55'10"E	23.97
L29	S66°09'19"E	136.17
L30	N85°52'03"E	156.09
L31	S13°28'47"E	18.77
L32	S16°09'05"W	106.03
L33	S10°16'08"E	68.28
L34	S79°43'52"W	25.00
L35	S13°28'47"E	18.77
L36	N85°52'03"E	156.09
L37	S66°09'19"E	136.17
L38	S41°55'10"E	23.97
L39	N89°43'48"E	174.88
L40	N21°21'43"W	112.55
L41	N40°07'13"E	108.90
L42	N40°07'13"E	108.90
L43	N51°44'17"W	116.81
L44	N47°25'56"E	104.08
L45	N43°35'51"E	101.55
L46	S27°35'14"W	32.29
L47	S89°43'48"W	95.94
L48	N27°00'13"E	104.38
L49	N30°21'28"E	126.55
L50	S62°24'12"E	76.30
L51	S42°42'02"E	69.22
L52	N89°43'48"E	174.88
L53	N89°43'48"E	174.88
L54	S27°35'14"W	110.80
L55	N71°00'45"W	31.76
L56	N11°19'32"E	108.59
L57	S60°35'20"W	146.62
L58	S48°50'33"W	133.22
L59	S66°09'19"E	34.20
L60	S66°09'19"E	27.19
L61	S02°08'08"E	113.51
L62	S02°57'34"W	114.22
L63	N60°41'08"E	71.38
L64	N61°33'17"W	95.88
L65	N41°32'41"E	99.64
L66	S26°11'35"E	155.11
L67	S89°43'48"E	83.87
L68	S13°00'02"E	86.50
L69	N77°33'58"E	102.41
L70	S66°09'19"E	26.40
L71	S13°00'02"E	37.01
L72	S03°11'42"E	90.89
L73	S03°11'42"E	90.89
L74	S08°12'56"W	111.46
L75	S22°35'56"W	191.57
L76	S41°31'31"W	132.13
L77	N89°28'31"W	69.69
L78	N89°28'31"W	45.56
L79	S89°31'36"E	7.01
L80	S72°05'38"E	90.27
L81	N81°24'28"W	102.55
L82	S84°31'48"E	110.60
L83	S89°08'53"E	119.71
L84	N89°50'54"E	114.39
L85	N89°22'18"E	115.43
L86	S85°39'43"W	108.19
L87	S16°09'05"W	10.21
L88	S44°50'18"W	60.69
L89	N00°49'19"E	143.77
L90	S17°01'57"W	145.85
L91	N43°50'50"E	65.05
L92	S89°43'48"W	51.20
L93	S16°52'11"W	83.13
L94	S12°12'57"W	121.15
L95	N84°55'50"W	65.13
L96	S25°48'42"W	137.16
L97	N18°37'12"W	84.47
L98	N33°32'08"E	67.28
L99	S00°00'00"E	160.00
L100	S00°00'00"E	160.00
L101	S00°00'00"E	160.00
L102	S00°00'00"E	160.00
L103	S00°00'00"E	141.75

CURVE	LENGTH	RADIUS	DELTA
C1	126.58'	150.00'	48921.02°
C2	105.25'	150.00'	2414.09°
C3	23.24'	150.00'	27568.36°
C4	140.85'	100.00'	8042.11°
C5	309.77'	600.00'	2934.52°
C6	230.56'	500.00'	2825.13°
C7	151.90'	180.00'	4821.02°
C8	93.06'	220.00'	2444.09°
C9	58.60'	120.00'	27568.36°
C10	183.11'	130.00'	8042.11°
C11	325.26'	630.00'	2834.52°
C12	216.73'	470.00'	2825.13°
C13	254.17'	55.00'	26447.03°
C14	244.39'	530.00'	2825.13°
C15	284.28'	570.00'	2834.52°
C16	98.60'	100.00'	6042.11°
C17	67.89'	180.00'	27568.36°
C18	104.24'	280.00'	4821.02°
C19	104.24'	180.00'	27568.36°
C20	21.77'	120.00'	3446.02°
C21	29.50'	120.00'	1405.00°
C22	10.40'	280.00'	2307.42°
C23	59.70'	280.00'	1212.56°
C24	102.77'	180.00'	3242.41°
C25	8.20'	180.00'	236.36°
C26	79.69'	180.00'	2522.01°
C27	81.20'	70.00'	6627.98°
C28	17.38'	70.00'	1414.13°
C29	49.13'	180.00'	1536.22°
C30	25.90'	220.00'	6444.42°
C31	67.16'	220.00'	17282.28°
C32	66.41'	55.00'	6910.50°
C33	25.11'	55.00'	2639.46°
C34	50.21'	55.00'	5218.25°
C35	49.33'	530.00'	519.56°
C36	49.32'	530.00'	519.56°
C37	26.30'	530.00'	519.56°
C38	26.30'	530.00'	519.56°
C39	41.97'	530.00'	4327.14°
C40	7.83'	570.00'	0271.14°
C41	57.22'	570.00'	545.05°
C42	21.20'	55.00'	2204.52°
C43	91.24'	55.00'	9503.11°
C44	141.93'	470.00'	1718.08°
C45	74.80'	470.00'	937.08°
C46	26.97'	130.00'	1153.10°
C47	10.01'	130.00'	424.43°
C48	32.66'	130.00'	1424.02°
C49	48.70'	130.00'	2127.45°
C50	64.76'	130.00'	2832.26°
C51	122.54'	570.00'	1219.04°
C52	106.69'	570.00'	1043.25°
C53	48.34'	280.00'	933.28°

**LEGEND**

- A QUARTER CORNER, AS NOTED
- PVD REBAR & CAP
- SET REBAR & CAP L# 18092



RECORDED'S CERTIFICATE  
 FILED FOR RECORD THIS.....DAY OF.....20.....AT.....M  
 IN BOOK.....OF.....AT PAGE.....AT THE REQUEST OF  
 DAVID P. NELSON  
 SURVEYOR'S NAME.....  
 COUNTY AUDITOR.....DEPUTY COUNTY AUDITOR.....  
 SURETOR'S CERTIFICATE

THIS MAP CORRECTLY REPRESENTS A SURVEY MADE BY  
 ME OR UNDER MY DIRECTION IN CONFORMANCE WITH THE  
 REQUIREMENTS OF THE SURVEY RECORDING ACT AT THE  
 REQUEST OF.....DAVID P. NELSON.....  
 IN.....NOV.....2010  
 DAVID P. NELSON  
 CERTIFICATE NO. 18092

**PLAT OF YELLOWSTONE TRAIL ESTATES  
 A PTN. OF THE EAST 1/2 OF SEC. 9, T.22N, R.1E., W.M.  
 KITITAS COUNTY, WASHINGTON**

DWN BY DATE JOB NO.  
 T.R./G.W. 04/2010 081777  
 CHKD BY SCALE SHEET  
 D. NELSON 1"=100' 3 OF 4



Western Washington Division  
 145 NE Juniper Street, Suite 201 • Sequim, WA 98227 • Phone: (425) 392-0250 • Fax: (425) 391-3055  
 Eastern Washington Division  
 108 East 2nd Street • Cle Elum, WA 98922 • Phone: (509) 674-7433 • Fax: (509) 674-7419